

## Cherayla Haynes

---

**From:** None <frontiers-info@kumc.edu>  
**Sent:** Friday, June 7, 2024 5:28 PM  
**To:** Cherayla Haynes  
**Subject:** MARG Bulletin 06





## Have you attended our monthly MARG Meetings?

We meet virtually every third Thursday of the month at 9am. Join us to learn about community based research projects & if you missed it, [click here](#) for our youtube playlist of previous meetings.



**FRONTIERS**  
CLINICAL & TRANSLATIONAL  
SCIENCE INSTITUTE  
AT THE UNIVERSITY OF KANSAS

### You can help shape research in your community

WE ARE FORMING A  
COMMUNITY ADVISORY BOARD!

#### Areas of Interest:

- Review Research Projects
- Give Feedback to Investigators
- Provide Insight to Frontiers Leadership
- Meet Quarterly virtually/in person

Let's have a  
conversation,  
click the QR code  
below!



Compensation  
\$100 per  
hour

#### Who are we looking for:

Anyone with interest in the impact of research, public health & patient outcomes  
Extensive experience is not necessary



[www.frontiersctsi.org](http://www.frontiersctsi.org)

For more information please contact  
Chera Yla Haynes: [CHaynes@kumc.edu](mailto:CHaynes@kumc.edu)

Share this recruitment link with your  
networks!

## Research and Discovery Grand Rounds



**FRONTIERS**  
CLINICAL & TRANSLATIONAL  
SCIENCE INSTITUTE  
AT THE UNIVERSITY OF KANSAS

Join Sravani Chandaka, Ph.D., Director of Research IT and Megan Kelly, Clinical Application Specialist at KU Medical Center as they discuss Heron, SlicerDicer, Epic recruitment tools and new rules governing contact information for potential participants, **Thursday, June 27, 12:00-1:00PM CT via Zoom.**

[Click here](#) to join the meeting.

The Center for African American Health  
invites you to celebrate freedom.

# JUNE TEENTH

## Celebration and Wellness Fair

**Elevate** ▲ **Empower** ▲ **Educate**

**June 14, 2024**

**4:00 p.m. to 8:00 p.m.**

**University of Kansas Medical Center  
Health Education Building Courtyard**

**Food, Music, Festivities, Health Screenings and much more!**

**Activities for children 6-12 from 4:00 p.m. - 7:00 p.m.**

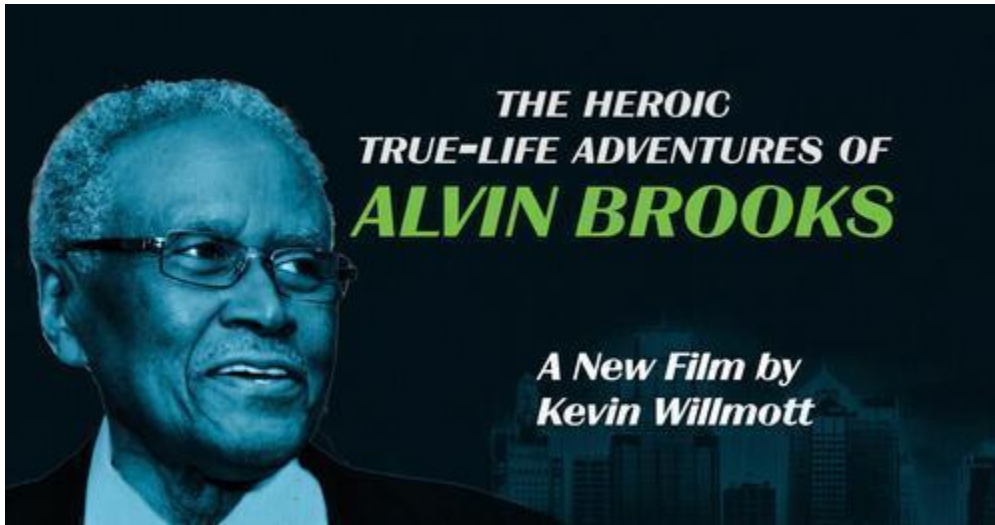
*Parents or guardians must accompany their children.*

*Parking is available at the P4 Bluff Garage located at Rainbow Blvd. & Adams Street*



*Scan Here to Register*

**KU** CENTER FOR AFRICAN  
AMERICAN HEALTH  
The University of Kansas Medical Center



Premiering as part of the Juneteenth Film Festival, “The Heroic True-Life Adventures of Alvin Brooks” is a tribute to one of Kansas City’s first Black police officers who went on to a storied career as the city’s first Black department director. The documentary is debuting as a part of the Juneteenth Film Festival on June 19th at [Screenland Armour](#) and will also will be shown June 30 at the [Free State Festival](#).



September 25, 2024 – September 28, 2024

Loews Kansas City Hotel

1515 Wyandotte Street  
Kansas City, MO 64108

### A RARE Evening with RareKC

September 26, 2024  
6:00 PM - 9:00 PM  
Loews Kansas City  
Event Lawn 7th floor  
1515 Wyandotte Street  
Kansas City, MO 64108

Week in RARE is coming to Kansas City, Missouri in 2024. Each year, Global Genes convenes one of the world’s largest gatherings of rare disease patients, caregivers, advocates, healthcare professionals, researchers, partners, and allies at the RARE Advocacy Summit and RARE Health Equity Forum to work together to build a path to hope. [Click here](#) to register.

Get your "A RARE Evening with RareKC" ticket by [clicking here](#).



## NIH Webinar: Fostering Cultures of Inclusive Excellence

This webinar will include four distinguished leaders from the NIH National Institute of General Medical Sciences, Howard Hughes Medical Institute, Morehouse School of Medicine, and Rochester Institute of Technology. They will discuss principles of inclusive practices that can be adopted by academic institutions across the biomedical, social, and behavioral research enterprise.

[Click here](#) to register for this event on Thursday, June 20th from 12-1:30 CST via Zoom.

---



The Clif Family Foundation, an organization started in 2006 to support small-to-midsize grassroots groups led by people with admirable vision and commitment. The Clif Family Foundation has been proud to support hundreds of organizations that are working tirelessly to strengthen our food system, enhance equitable community health outcomes, and protect the places they play by being stewards of the environment and natural resources. [Click here](#) to learn more about how priority is given to applicants that address two or more of our funding priorities at the same time:

Strengthen our food system

Enhance equitable community health outcomes

Safeguard our environment and natural resources

Demonstrate strong community ties

---





**Join us in shaping the future  
of maternal health....together  
we can deliver change!!!**

**BECAUSE  
MOMS ARE  
IMPORTANT!!!**

**Providers**

**Staff**

If you are a maternal health care provider or staff, cradle KC needs your help in improving maternal health!

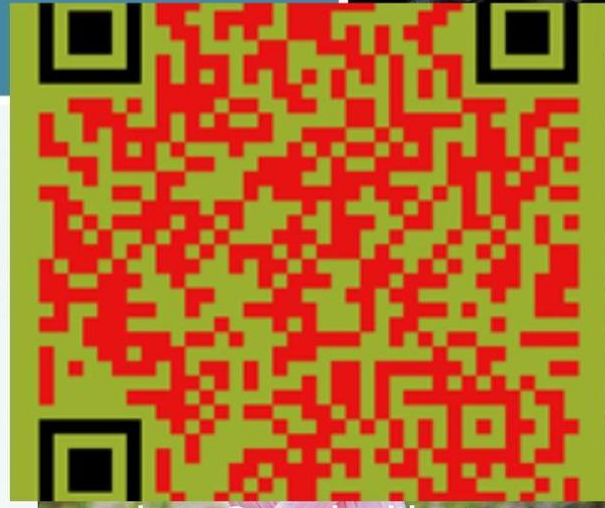




**ATTENTION NEW  
AND PREGNANT  
MOMS, WE WANT TO  
HEAR ABOUT YOUR  
PRENATAL AND  
POSTPARTUM CARE  
EXPERIENCE**

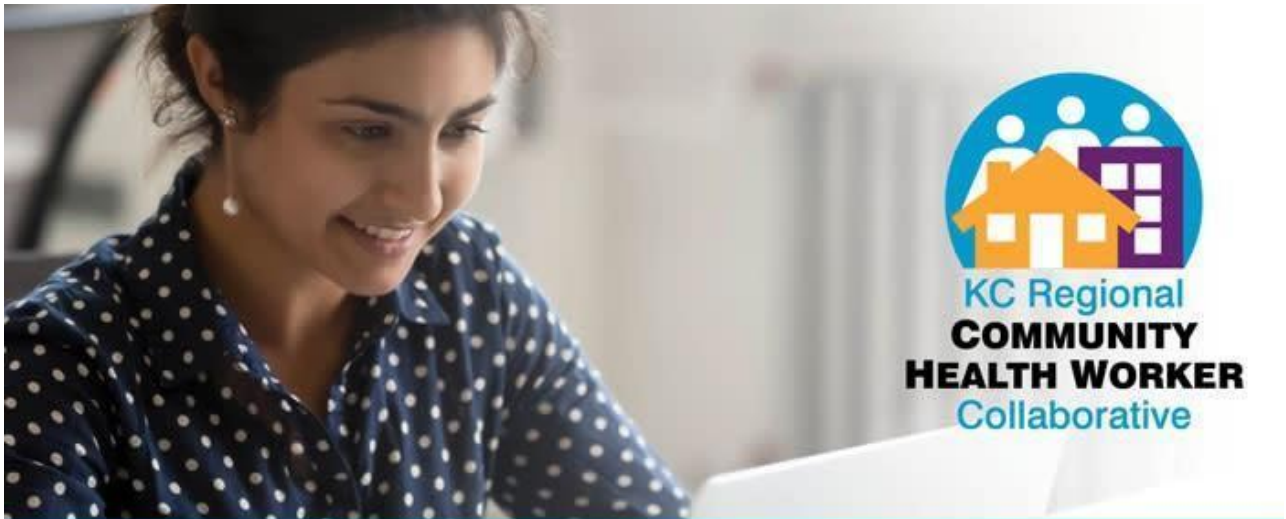
CRADLE KANSAS CITY IS ASKING  
YOUR OPINION OF THE PRENATAL  
CARE YOU RECEIVED IN YOUR MOST  
RECENT PREGNANCY (WITHIN 10  
YEARS OR LESS)

[HTTPS://TINYURL.COM/YYRBXBZ4](https://tinyurl.com/yyrbxbz4)



Cradle Kansas City

[mchrans@wycohealth.com](mailto:mchrans@wycohealth.com)



## Community Health Worker Special Training

Train the Trainer (8 sessions: 7/9-9/24): This course is for CHWs and CHW allies interested in becoming CHW trainers. The curriculum will train you to 1) to be effective instructors of CHWs and 2) to teach the CHW Core Competency Curriculum for Kansas and Missouri. Upon completion of this course, participants will be certified as CHW instructors by the Missouri Department of Health. [Click here](#) for more information.



Each month, Social Health Labs awards \$1,000 to support a community project that aims to achieve the goals below.

If you have an idea to improve social health in your neighborhood, click [here](#) for this grant opportunity.

- Foster friendship and connection
- Strengthen neighborhood bonds
- Build community cohesion locally
- Bridge interpersonal and intergroup divides
- Reduce social isolation and loneliness





Kansas Healthcare  
COLLABORATIVE

# *Summit on Quality*

*August 8, 2024*

*Wichita State University  
Rhatigan Student Center*

## **Audience**

**Clinicians, Nurse Leaders, Hospital and Clinic Leaders,  
Infection Preventionists, Pharmacists and Quality Leaders**

## **Register Here**

**Registration Cost \$150: Includes lunch and CNE\***

The Summit on Quality is an educational event drawing health care leaders from across Kansas. Now in its 15th year, Summit programming is designed to engage and connect a wide range of health care professionals—including physicians (particularly residents), nurses, clinic managers, hospital CEOs and other senior management, quality improvement professionals, risk managers, infection preventionists, long-term care providers and other interested health care professionals — practicing in both urban and rural settings throughout our state.



## Unified Government Transportation Department Microtransit Service



### Midtown to Legends Microtransit Zone

*Service Area:* Leavenworth Road on the north, N 110<sup>th</sup> Street on the west, the Kansas River and Metropolitan Ave. on the south, and 42<sup>nd</sup> St. and I-635 on the east. The service area also connects passengers to the 47th Street Transit Center (Indian Springs), Merriam Town Center Transit Hub, and Turner High School.

*Service Hours:*

Monday – Friday, 5:30 AM – 8 PM  
Saturday & Sunday, 7 AM – 4:30 PM

Book by phone (913) 573-8351 M-F

Weekend Dispatch (913) 469-8747 Sat & Sun

Fare: \$3.00 per person per trip within the Zone

Urban Outfitters Employees ride FREE with PROOF of Employment – Badge Required

### What is Microtransit?

Microtransit is an on-demand shared ride transit service that operates in a specific radius that includes fixed route access.

For More Information:

[www.wycokck.org](http://www.wycokck.org)

### **View Service Area**



### General Booking Information

Microtransit service allows passengers to request and pay for rides through the IRIS Mobile App (for Android and iOS,) and IRIS Booking Website @ <https://book.iris.rideco.com/login>

Or Dispatch Centers:

Book by phone (913) 573-8351 M-F  
Weekend Dispatch (913) 469-8747 Sat & Sun

### Download IRIS to Reserve YOUR Ride



Android



iOS

Fare: \$3.00 per person per trip within the Zone

### Bonner Springs Tiblow to Edwardsville

Bonner Springs residents can access the Midtown to Legends Microtransit Zone.

Service Hours: Mondays and Thursdays ONLY, 8:30 AM – 3:30 PM.

Designated Pickup/Dropoff Points: Sun River Apartments and Edwardsville Court Apartments

Bonner Springs Tiblow Booking (913) 422-5355

<https://www.bonnerrsprings.org/262/Public-Transportation>



Contact Mallory Gevertz

Community Prevention  
Coordinator [via email](#).

Johnson County Mental Health, and specifically the Johnson County Suicide Prevention Coalition have a goal to enhance community support and response to mental health crises and build mental health awareness.

The training, education, and resources offered can assist you and your team in effectively responding to individuals in distress *and* knowing where to refer them.

**The resources and trainings are free, easily accessible and can be delivered in person or virtually :**

- Print and other materials: brochures, resources, posters, lock boxes, etc.
- Educational training on how to use print materials and talk to individuals at risk for suicide
- QPR training (Question, Persuade, Refer)
- 988 (suicide and crisis lifeline) education. Understanding the difference between 911 and 988.
- Understanding co-responder and crisis response team programs
- Most materials are available in English and Spanish. If there is large demand for anything in Spanish, it can easily be made.



Join members of the [KU Medical Arts Symphony](#) for a free chamber music concert featuring Beethoven's Septet for clarinet, horn, bassoon, violin, viola, cello, and double bass, and a new work by local composer Tim Brewer on June 9th.



FIFTH ANNUAL  
**BlaQOut.**  
EMPOWERMENT  
SUMMIT

*Bigger.  
Bolder.  
Blacker.*

**SATURDAY, AUGUST 10**  
Kauffman Foundation  
4801 Rockhill Road  
Kansas City, MO 64110

Save the date and prepare to join BlaQOut on **Saturday, August 10**, at the Kauffman Foundation Conference Center, **4801 Rockhill Road, Kansas City, MO 64110**, for the fifth annual **BlaQOut Empowerment Summit!**

For more information, [click here!](#)

[Manage](#) your preferences | [Opt Out](#) using TrueRemove™  
Got this as a forward? [Sign up](#) to receive our future emails.  
View this email [online](#).

4330 Shawnee Mission Parkway, Suite 3220 | Fairway, KS 66205 US

This email was sent to [chaynes@kumc.edu](mailto:chaynes@kumc.edu).  
To continue receiving our emails, add us to your address book.

**emma**