

Communicating Research to the Community



FRONTIERS
CLINICAL & TRANSLATIONAL
SCIENCE INSTITUTE
AT THE UNIVERSITY OF KANSAS



Not a Frontiers Member?
Scan the QR code below to join today!

March 9, 2023
11 a.m. – 6 p.m.

**University of Kansas Edwards Campus,
BEST Conference Center**

**Frontiers Clinical and Translational
Science Institute Research Symposium**

Parking available in Lot B off of 125th Street



FRONTIERS
CTSI

www.frontiersctsi.org

Symposium Schedule

11:00 a.m.	Welcome and Frontiers Overview	1:45 p.m.	Concurrent Sessions
11:15 a.m.	Keynote Presentation: Communication is Key: Discover Ways to Build Trust, Create Genuine Relationships, & Spark Positive Community Impacts by Sara Serritella		Communication Workshop: Gain a Superpower in Just One Hour: How to Transform Your Communication to Connect with Any Audience led by Sara Serritella. Room: BEST Conference Room; in-person only
11:55 a.m.	Oral Presentation: Pioneer Baby & eMOMSTM – Improving health among pregnant and postpartum populations in rural Kansas with an urban connection - Lisette T. Jacobson, PhD, MPA, M.A.		Evaluating Research Equity, Accessibility, Diversity, and Inclusion Programming for Translational Science Benefits presented by Clara Pelfrey, PhD and Gelise Thomas, JD. Room: BEST 135
12:10 p.m.	Oral Presentation: Autonomic nervous system markers of music-elicited analgesia in people with fibromyalgia: A double-blind randomized pilot study - Rebecca Lepping, PhD	2:45 p.m.	Break
12:25 p.m.	Break	2:50 p.m.	Panel Discussion: Engaging with Communities Panelists: Cheryl Jernigan, Mariana Ramirez, and Kelly Ranallo. Moderator: Sara Serritella. Room: BEST Conference Room
12:40 p.m.	Concurrent Sessions	3:50 p.m.	Break
	Community Engaged Research Training for Researchers: Sharing Experiences and Best Practices presented by Stephania Miller-Hughes, PhD, MS, MSCI. Room: BEST 135	3:55 p.m.	Oral Presentation: Estimating Walking Intensity In Adults With Down Syndrome Using A Portable Accelerometer - Brian Helsel, PhD, CSCS
	Inside Out: Mapping Local Community Networks to Improve Outreach and Communication presented by Jenni Cross, Ph.D. Room: BEST 125	4:10 pm.	Oral Presentation: A retrospective chart review study evaluating the diagnostic accuracy of the newly proposed clinical definition of Necrotizing Enterocolitis (NEC) - Mira Malavia
	Setting up a Community Advisory Board: Lessons learned and practical suggestions presented by Elizabeth Cohn, PhD, RN, NP, FAAN. Room: BEST 120	4:25 p.m.	Closing Remarks
1:40 p.m.	Break	4:30 p.m.	Poster Session and Reception

Frontiers Leadership



Mario Castro, MD, MPH

Dr. Castro is the co-PI and Director of Frontiers. In this role, he leads, manages, and shapes the strategic direction of the clinical and translational research enterprise throughout the Kansas City region and across the state. His Frontiers responsibilities also include serving as liaison to national committees and collaborating with leaders from all Frontiers institutions. Dr. Castro joined the University of Kansas Medical Center in 2019 after 25 years at the Washington University School of Medicine in St. Louis, where he oversaw the asthma and airway translational research unit, which conducted 30 clinical trials at a time. He is currently the Scientific Director of the Rainbow Clinical and Translational Science Unit, the Chief of the Pulmonary, Critical Care and Sleep Medicine Division of the Department of Internal Medicine and is Vice Chair for Clinical and Translational Research at the University of Kansas Medical Center.



J. Steven Leeder, PharmD, PhD

Dr. Leeder is the co-PI and co-Director of Frontiers and shares responsibility for the vision and direction of Frontiers with Dr. Castro, spanning early lifespan through adulthood, having served as co-Director of the TL1 program for Frontiers 2.0. Dr. Leeder's research focuses on characterization of the relative contributions of ontogeny, genetic variation, and disease to observed variability in drug disposition and response in children. Over the years, these research activities have coalesced into the GOLDILOKs initiative: Genomic- and Ontogeny-Linked Dose Individualization and cLinical Optimization for Kids funded as one of four Specialized Centers for Research in Pediatric and Developmental Pharmacology supported by the Eunice Kennedy Shriver National Institute for Child Health and Human Development.

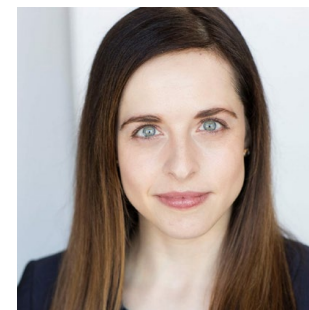
Speakers, Panelists and Community Tables



Elizabeth Cohn,
PhD, RN, NP,
FAAN, Hunter
College, The City
University of
New York



Cheryl Jernigan,
CPA, FACHE,
Patient and
Community
Partner Group



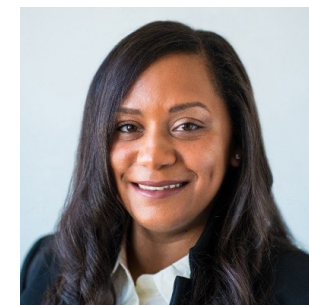
Sara Serritella, Director of
Communications, Institute for
Translational Medicine. Lecturer, The
University of Chicago and UChicago's
Pritzker School of Medicine



Jenni Cross,
PhD, Colorado
State University



Clara Pelfrey,
PhD, Case
Western
University



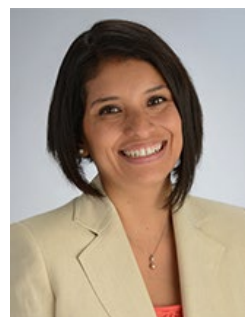
Gelise Thomas, JD,
MS Case Western
University



**Stephania
Miller-Hughes,**
PhD, MS, MSCI,
Vanderbilt
University
Medical Center



**Kelly
Ranallo,**
Founder/Vice
Chair,
RareKC



**Mariana
Ramirez, LCSW,**
Director,
JUNTOS Center
for Advancing
Latino Health

Community Tables
JUNTOS KC
Pediatric Research Site

Poster Presentations

Cerebrovascular Pulsatility within Stroke Survivors is Significantly Elevated 30 Minutes After High-Intensity Interval Exercise Compared to Controls – Stacey Aaron, PhD

Open or Robotic? Radical Cystectomies for Patients with Non-Metastatic Bladder Cancer: A Systematic Review and Meta-analysis – Jada Ohene-Agyei

Bispecific CAR T Cells Targeting Breast Cancer Brain Metastases – David Akhavan, MD

Relative Quantification of the Effect of Fomepizole on Acetaminophen- induced Renal Injury with Desorption Electrospray Ionization Mass spectrometry Imaging – Jephthe Akakpo, PhD

Caregiver Mental Health Screening in a Pediatric Feeding Clinic – Dana Bakula, PhD

Research Informatics at The University of Kansas Medical Center – Sravani Chandaka

Hospital to Outpatient Transitions of Care in Tobacco Treatment – Erica Cruvinel, PhD

Characterizing Aging-Related Health in Older Adult Women with a History of Incarceration – Amanda Emerson, PhD, RN

Development of an mHealth Functionality Focused Body Image Intervention for Latinx – Sarah Johnson, MA

Supporting a Complex Study Design Using REDCap and MyCap – Mary Penne Mays

A prospective observational study to assess the role of CPAP on blood pressure and heart rate variability – Diego Mazzotti, PhD

Pharmacodynamic Biomarker Development in Adolescents with Eating Disorders – Stephani Stancil, PhD, APRN

Investigating how oral hypersensitivity influences challenging eating behaviors in children with autism – Anna Wallisch, PhD