

Frontiers Annual Member Survey 2024

Survey Purpose

- ✓ 2024 Annual Member Survey emailed to all **687** Frontiers members with a **23.4%** response rate.
- ✓ Assessed members' perceptions and overall engagement with Frontiers resources.
- ✓ Dynamic approach to define areas for improvement as indicated by survey responses.

About the Respondents

20%
of respondents are from Children's Mercy Hospital Kansas City



49%
of respondents are from KUMC-Kansas City



7%



of respondents are from KU-Lawrence

30%
of respondents are employed as **research staff members**

33%
of respondents are just starting out their research careers as **new investigators**

48%
of respondents are primarily involved with **clinical research**

Respondent characteristics aligned with those of the broader Frontiers membership population in terms of Institution and Career Stage.

Engagement in Services

This section focused on members' experiences and perceptions of Frontiers services and activities.



56% of respondents were mostly involved in webinar and training activities



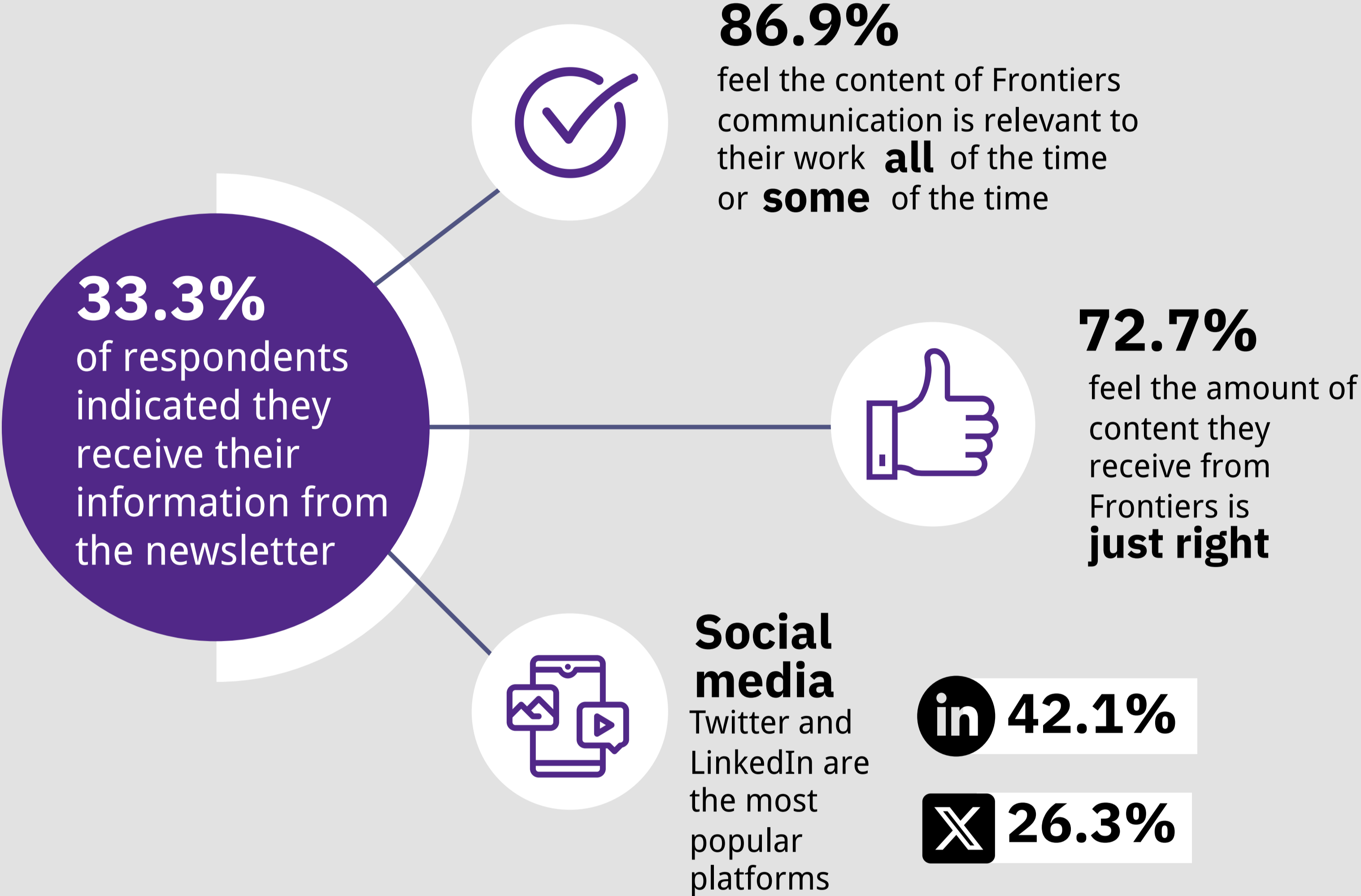
55% of respondents did not experience any barriers connecting with services



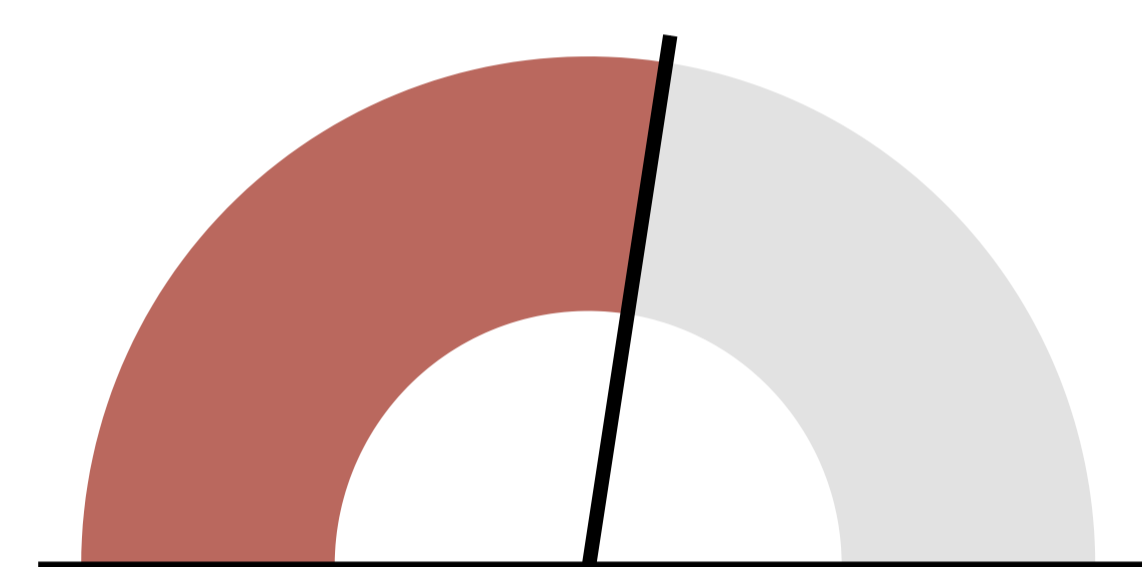
60% of reasons for not using services were due to lack of need or unawareness

Frontiers Communication Outlets

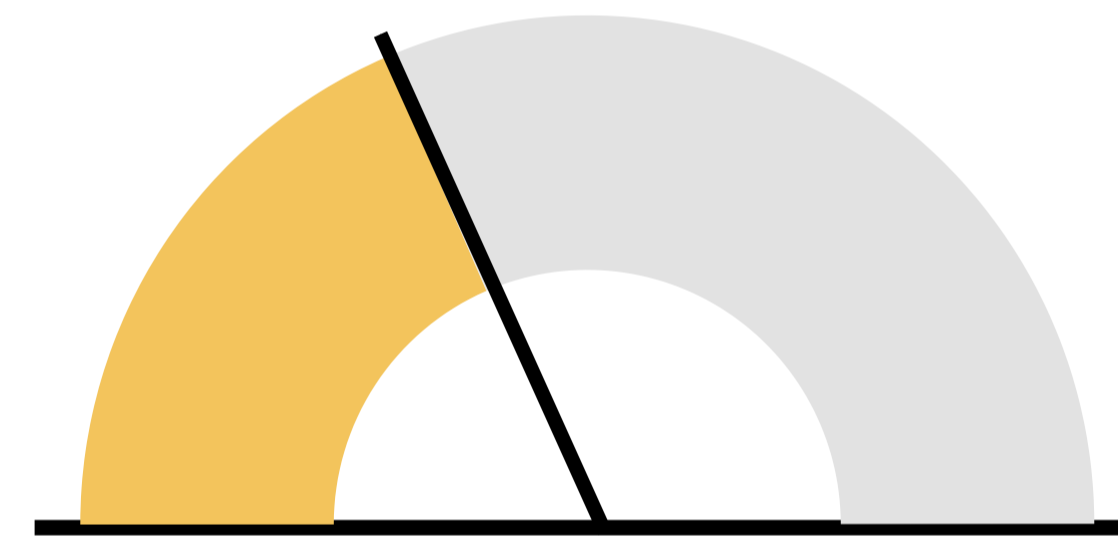
The Frontiers newsletter is the most commonly utilized communication source.



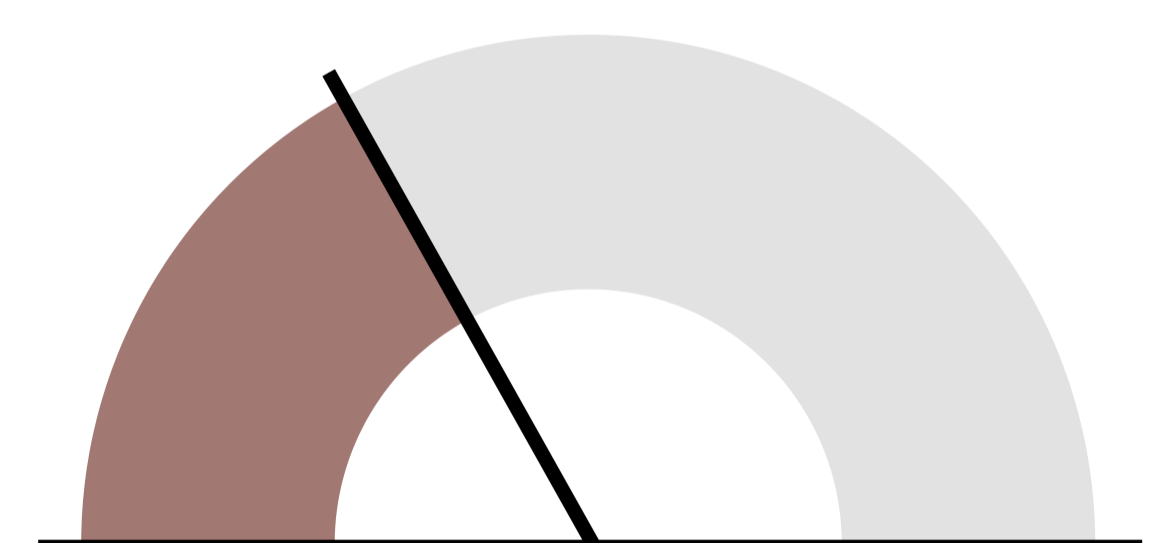
Frontiers Membership has helped me...



55% ... enhance my general knowledge of translational science.



37% ... develop collaborations with other investigators outside of home institutions.



34% ... advance my career.

Frontiers Impacts on Members' Professional Development

Funding Opportunities

"Protected time to do research beyond clinical fellowship has provided opportunity to apply for NIH grants and potentially shape my early career."

Scientific Editing & Mock Study Section

"The mock study section was extremely helpful both in revising a grant application and in getting insight into the inner workings of study section."

Facilitating Collaborations

"The Community Engagement Core has shown me great support for advancing my community-based research efforts."



Areas for Improvement:

Cross-Functional Opportunities

- Improve interdisciplinary focus by extending opportunities outside of the medical discipline.
- Including more opportunities for community-based participation research.

Expand Resources and Funding

- Broaden statistical supports by increasing resources and assistance with a focus on students.
- Incorporate more resources and funding opportunities for basic research.

Increase Awareness of Services

- Launch communication efforts to reach researchers outside of KU network.



Actions for Improvement:

We take your feedback very seriously. We have discussed ways to address these improvements at length with our leadership and administration.

Here are some of our action items:

- Disseminate a specialized newsletter that includes all relevant funding opportunities.
- Create enhanced materials for member orientation.
- Expand our video content:
 - Introductions to services
 - In-depth interviews with awardees and trainees
 - How-to video content on navigating the website & our resources